

14. In a survey of student pastimes, a Junior Certificate class returned the following results:-

Sport 40%, Music 30%, Television 20%, Reading 10%.

Divide the given rectangle to represent this information graphically.

Use shading to enhance the presentation.



15.

A survey of weekly mobile phone usage shows the following results for four students A, B, C and D.

A — 180 minutes

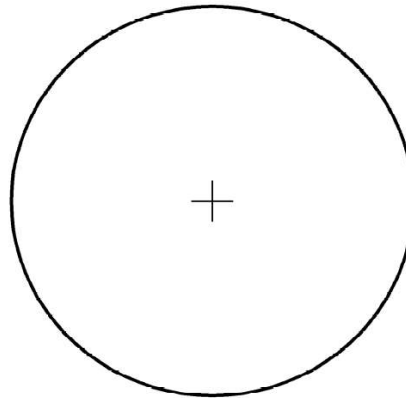
B — 45 minutes

C — 90 minutes

D — 45 minutes

Divide the given circle to represent this information graphically.

Shade **OR** colour the completed diagram.

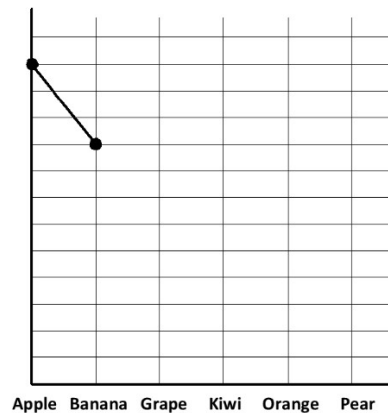


15. The sale of fruit in a school canteen was recorded over the period of a week.

The following are the results:

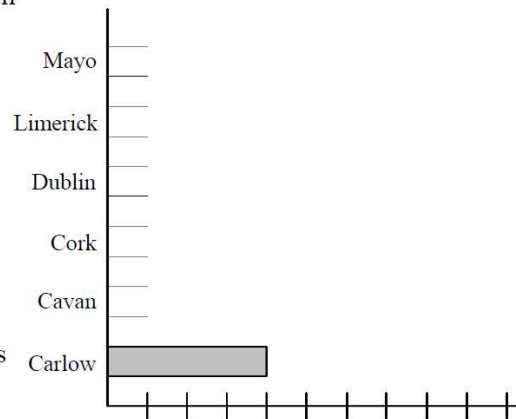
- Apple - 60
- Banana - 45
- Grape - 25
- Kiwi - 20
- Orange - 40
- Pear - 10

Complete the chart to represent this information graphically.



15. Six county teams competed in a football tournament. Shown below are the number of goals scored by each team during the tournament.

Carlow	-	4 goals
Cavan	-	5 goals
Cork	-	9 goals
Dublin	-	3 goals
Limerick	-	8 goals
Mayo	-	6 goals

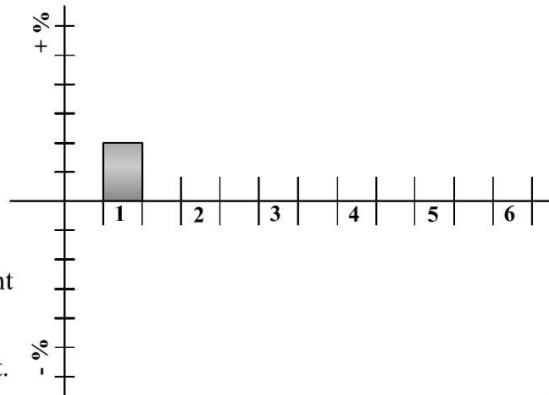


Complete the bar chart to represent this information graphically.

Colour **or** shade the completed chart.

15. The performance of a student in their Christmas examinations was compared to their performance in the summer examinations. The following changes were recorded:

1. Maths - + 10%
2. English - - 5%
3. Irish - + 30%
4. Science - - 15%
5. History - + 20%
6. Geography - + 15%



Complete the given chart to represent this information graphically.

Colour **or** shade the completed chart.

15

The figure shows three timer switches for an immersion heater. The switches are measured in minutes as shown.

Shade the switches to indicate the following time settings:

- Switch 1 - 50 minutes
- Switch 2 - 20 minutes
- Switch 3 - 1 hour 10 minutes

